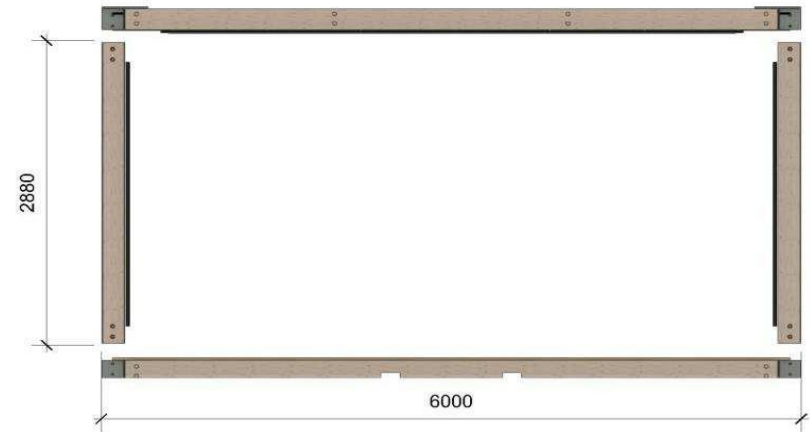


# COMMUNITIS

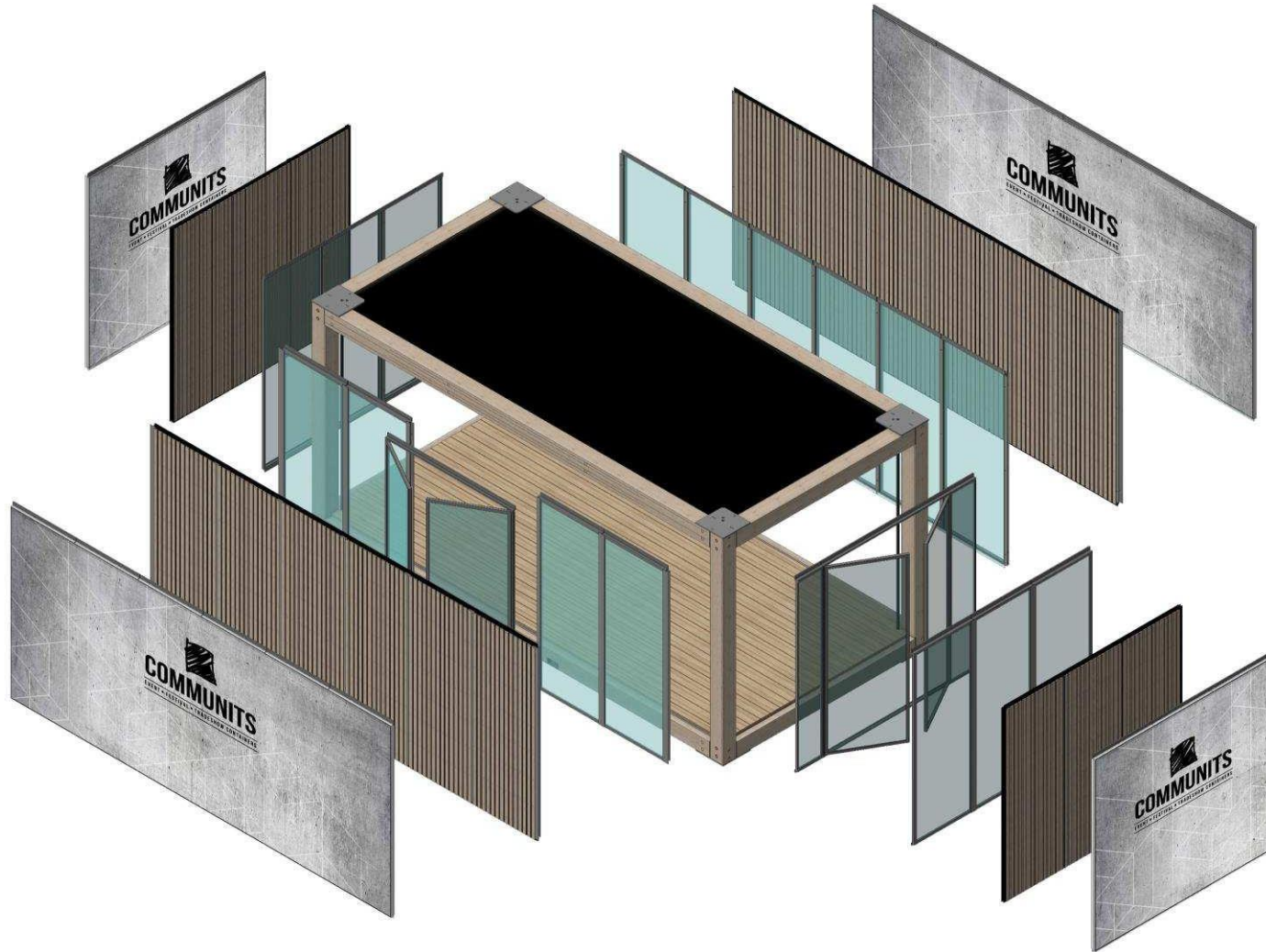
EVENT ■ FESTIVAL ■ TRADESHOW CONTAINERS

## PRESENTATION WOODLINE CONCEPT

- WOODEN MODULAR STRUCTURE -



FLAT PACK DESIGN



EXPLOSION VISUAL

# THE WOODLINE CONCEPT

## WOODEN CONSTRUCTION

The Woodline is made entirely of wooden beams. This not only results in a sustainable look but is also ecologically friendly due to the possibility of reusing the materials.

## FLATPACK

The construction is based on flat-pack. This makes it possible to transport several units on one transport. Besides saving on transport costs, this also results in CO2 savings of about 60% compared to regular units. It is also possible to transport the units built up.

## MODULAR

The units can be flexibly connected and stacked according to individual requirements. With a size of 600x300, they offer countless possibilities, especially as the units can also be placed at right angles to each other. Moreover, the walls are adaptable to specific needs, with several available wall types to choose from.

## BENEFITS

### 1 Sustainable solution

The wooden construction is reusable and the flatpack concept reduces transport, resulting in significantly lower CO2 emissions than when using regular units.

### 2. Limitless configurations

Thanks to the modularity of the structure, almost any shape is possible. The flexibility in placing walls adds to this versatility.

### 3. Rapid (diss)assembly

Flat-pack or built-up transport of a plug-and-play product ensures efficient installation time on site. Transporting several units on one freight also allows for rapid construction of large configurations.

### 4. Premium finish

The Woodline is finished with high-quality materials, both structurally and aesthetically.

### 5. Plug&Play

Besides plugging in 1 plug, no further work is required. Once installed, the Woodline is immediately ready for use.

### 6. Unique

The Woodline is a unique structure that stands out not only for its wooden look but also for its endless possibilities.

# SPECIFICATIONS

## 1. DIMENSIONS

- 600x300x285cm (external dimensions).
- Height of ceiling 248cm.
- Wooden construction constructed of laminated pine beams 200x200mm..

## 2. FLOORING

- Floor finish with solid oak floorboards.
- Fully insulated floor.
- Floor construction has a load-bearing capacity of 5Kn per M2.
- Corners fitted with hatches for adjustable feet and interior electrical sockets.

## 3. WALLS

Basic walls:

- Glass in powder-coated steel frame; finish is bronze coloured
- Wooden wall, insulation panel covered with wooden panels.
- Print wall, insulation panel with double-sided aluminium frame for tendon cloth.

## 4. DOORS

- Double glazed external door with steel frame, finish steel is bronze coloured.
- Wooden interior door with steel frame.
- Doors can be placed on any side.

## 5. ROOF/CEILING

- Roof construction includes beam roof boarding. Rainwater drains in all corners.
- Roof finished with EPDM rubber, fully bonded.
- Roof element fitted on the inside with steel angle bars for structural stability.
- Fully insulated ceiling.
- Bottom ceiling finished with wooden panels.

## 6. LIGHTING/POWER

- Basic lighting via 4x dimmable spotlights.
- 2x rails for adding clickable spotlights
- Each unit has a powersocket in the floor hatch in all corners.
- Power connection via 230v Shuco socket under the unit. One required per unit.

## 7. DRAINAGE

- Drainage per unit using internal visible drainage pipes (40 mm) in the corners.
- Drainage pipes to be concealed by cove.

## 8. OTHER NOTES

- Fully stackable, switchable and can be fitted with roof terrace.
- Units are levelled using leveling feet in the four corners on the inside.
- Units are fitted with forklift scopes at the front.
- Load-bearing capacity of roof terrace is 3.5Kn per M2.
- Static calculations of desired setting on request (charges apply).

## 9. LOGISTICS

- Up to 8 units, excluding walls, can be transported on 1 crane truck with trailer.
- (Un)Loading by crane or forklift (min 3T).
- Units can also be transported assembled. Maximum 2 per truck.

## 10. (DE)ASSEMBLY

- Units are assembled on site and then lifted into place by crane
- Minimum of 8 units can be built per day. Depending on location.

# TARGET GROUPS

The applications of the Woodline are endless. You can produce any configuration you want. And therefore, any interpretation you want. With its warm appearance and high-quality finish, the Woodline is ideal for use at premium events.

The Woodline has been specially developed for temporary use. Because of its plug&play design and finish, a large number of square metres of high-quality finished temporary space can be created in a short time. Longer-term use is of course also possible. We can adjust the finish to suit.

Below are some examples of applications in various segments:

## 1. (SPORT)EVENTS

- (VIP) Hospitality
- Pop up Showroom
- Pop up Shop (Sponsor of Merchandise)
- Pop up Restaurant
- Brandactivations
- Broadcaststudio for radio & television

## 2. AUTOMOTIVE

- Pop up Showroom
- Brandactivation

## 3. EXHIBITIONS

- Exhibitionstand
- Podcast studio
- Hospitality area

## 4. HORECA

- Expanding terrace in summer
- Pop up in the winter



STEEL RAILING



GLASS RAILING

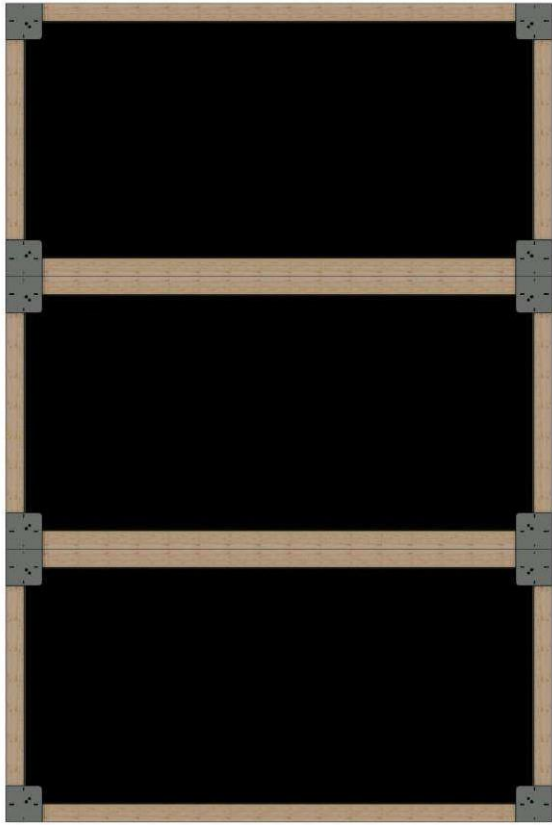
---

OPTIONAL ROOFTOPTERRACE



STAIRCASE



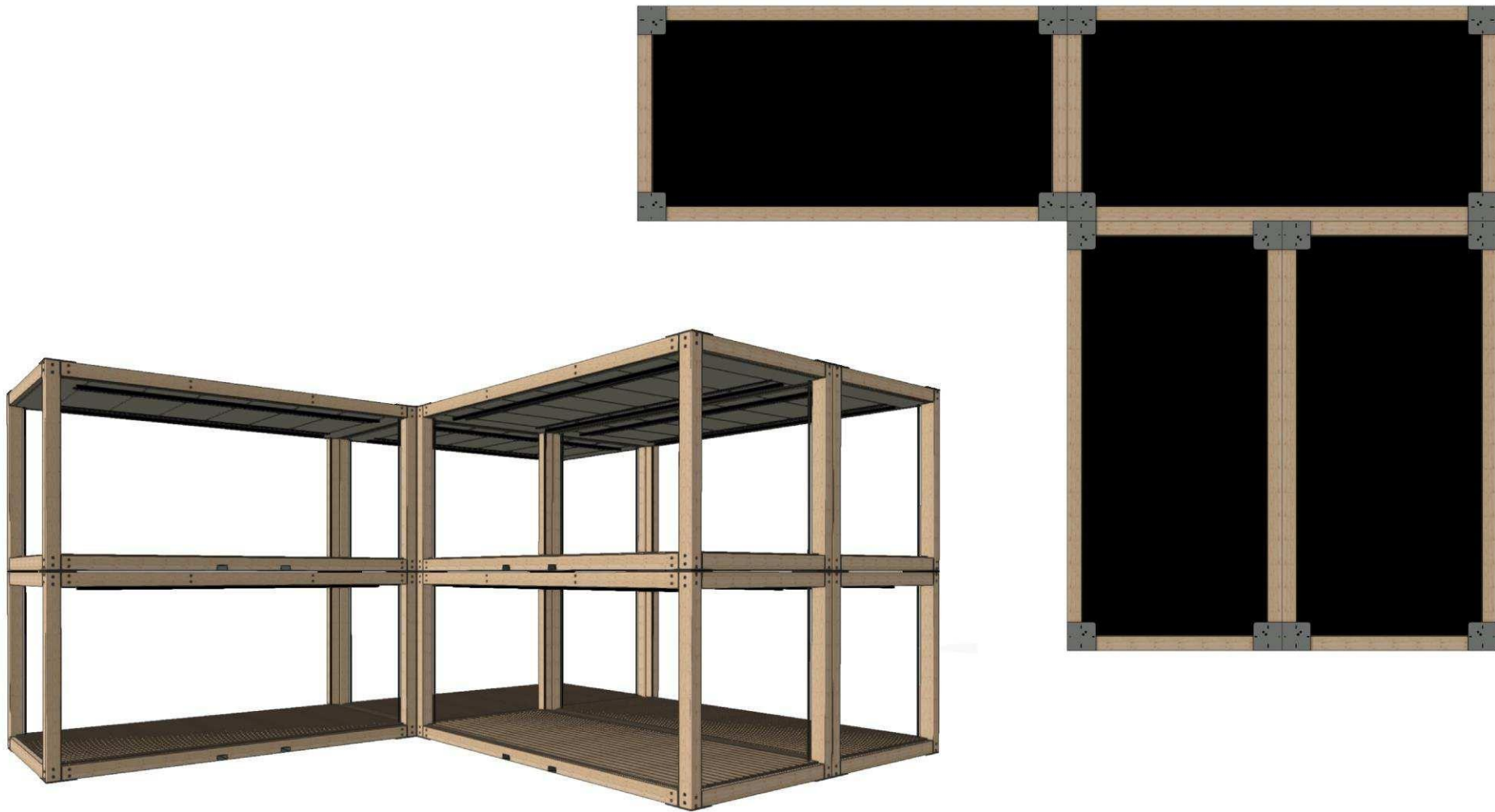


---

CONFIGURATIONS



CONFIGURATIONS



---

CONFIGURATIONS



---

CONFIGURATIONS



INSPIRATION



INSPIRATION

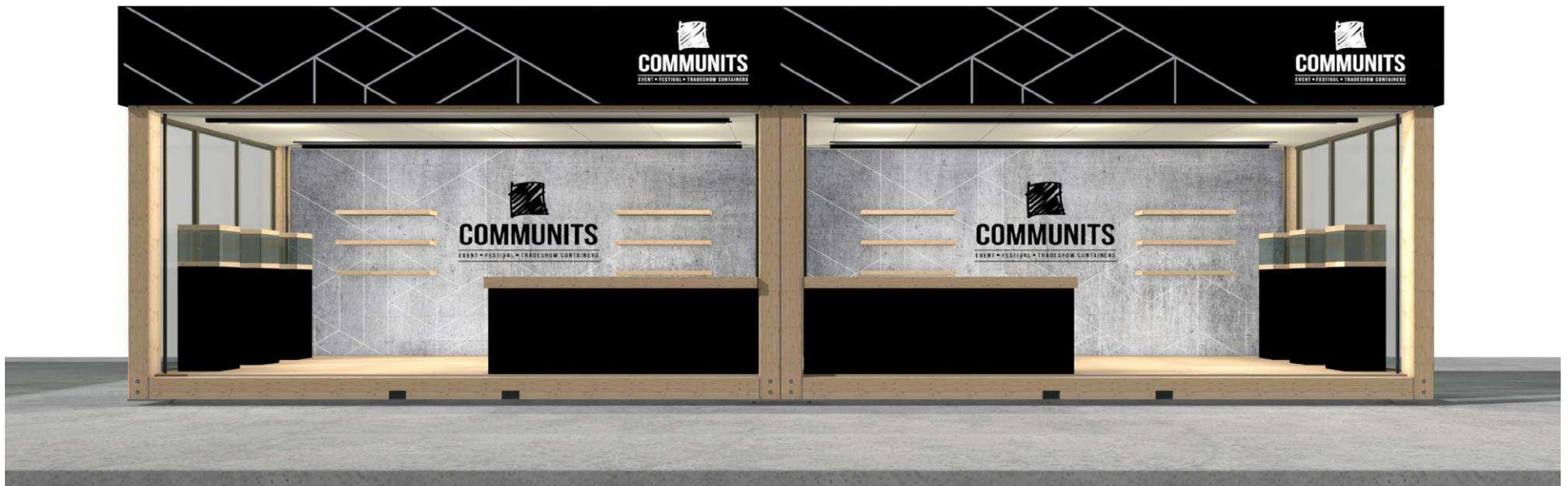


INSPIRATION



INSPIRATION

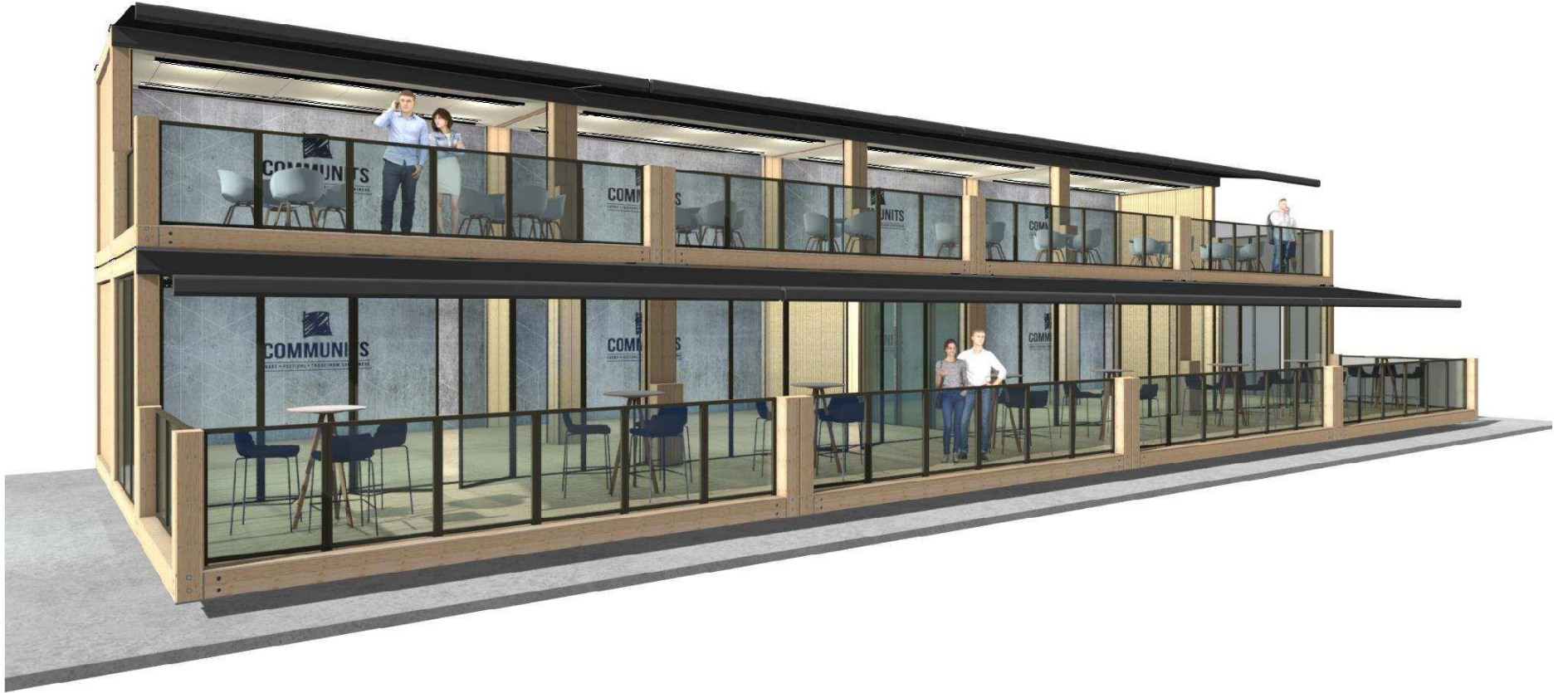




INSPIRATION



INSPIRATION



INSPIRATION



INSPIRATION



INSPIRATION



INSPIRATION



INSPIRATION



INSPIRATION





---

INSPIRATION



PROJECTS



---

PROJECTS



PROJECTS



PROJECTS